



artglass

LIFETIME ACRYLIC

Artglass Lifetime Acrylic

The Optimal Glazing Choice

Anti-reflective

99% UV blocking

Optically pure substrate

Shatter-resistant

Half the weight of glass

Anti-static

Abrasion resistant

Easy to clean

Masking foil

Anti-reflective and anti-static coating

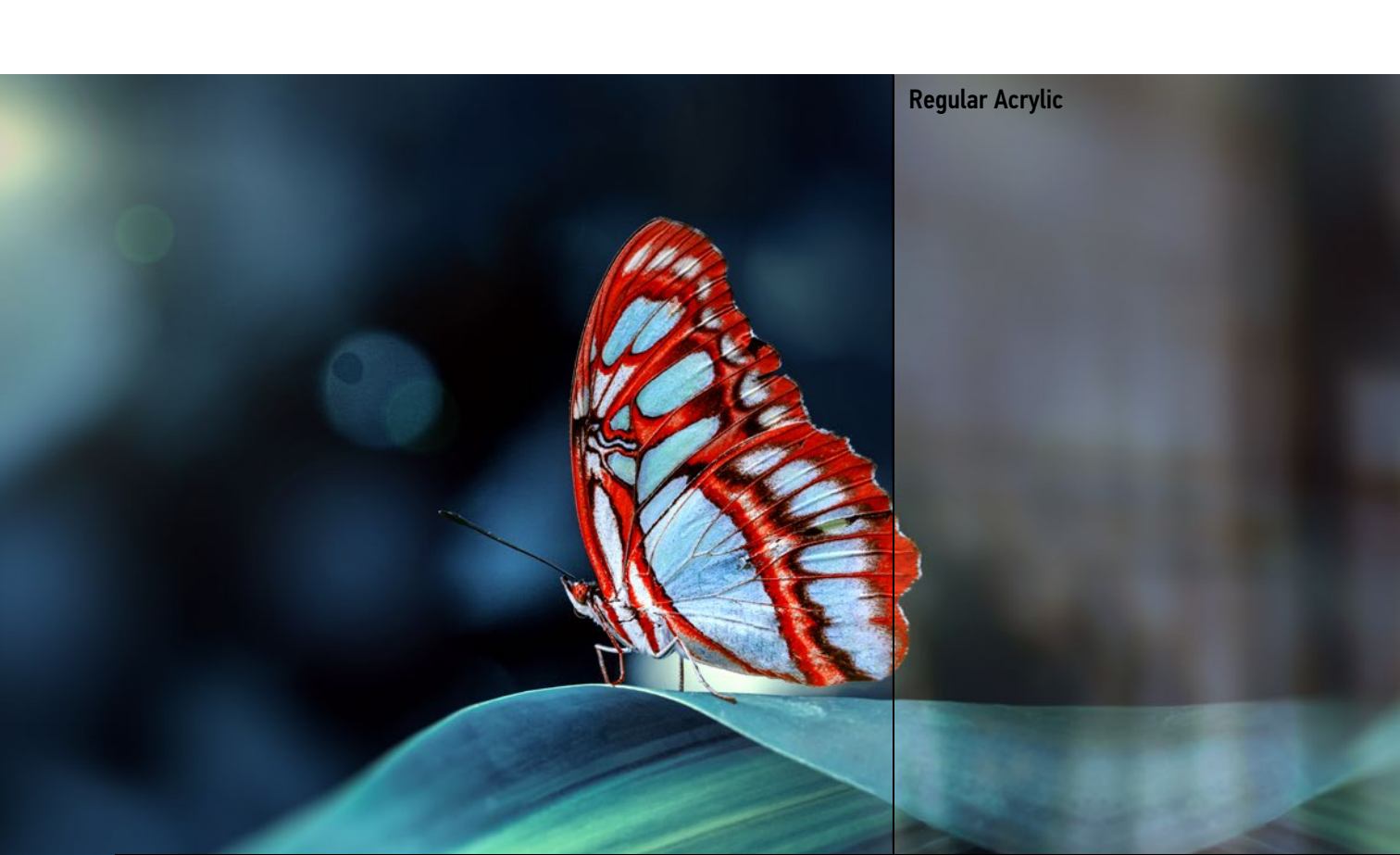
Abrasion-resistant (hard) coating

Premium 99% UV-blocking acrylic substrate

Abrasion-resistant (hard) coating

Anti-reflective and anti-static coating

Masking foil



Regular Acrylic

Artglass Lifetime Acrylic

Premium anti-reflective acrylic glazing for picture framing

Artglass Lifetime Acrylic is a premium acrylic glazing product designed for the most precious artworks and memorabilia.

Choose Artglass Lifetime Acrylic for:

- Supreme clarity and UV protection
- Less weight and easier transportation
- Reduced risk of artwork damage from shattered glass

	Substrate	Hard coated premium acrylic
	Light reflection	<1%
	Light transmission	>98%
	UV protection	~99%
	Thickness, mm	3
	Conductivity level, ohms/square	1.0 x 10 ⁹

Product features

Shatter resistant

Artglass Lifetime Acrylic is **not only lighter, but also shatter-resistant**, making shipping of your art even more convenient and safe.

Abrasion resistant

The hard coating of the acrylic substrate **protects the glazing against scratches and ensures exceptional durability.**

Easy to clean

Artglass Lifetime Acrylic **can be cleaned just like regular picture framing glass** - using a soft microfiber cloth and an ammonia-free glass cleaner. The high-quality optical coating ensures durability for years to come.

Supreme optical performance



The premium plexiglass substrate offers **excellent clarity and color precision**. Our anti-reflective coating elevates the optical performance, and reduces light reflections to ~1%. **Allow viewers to appreciate art without the distractions!**



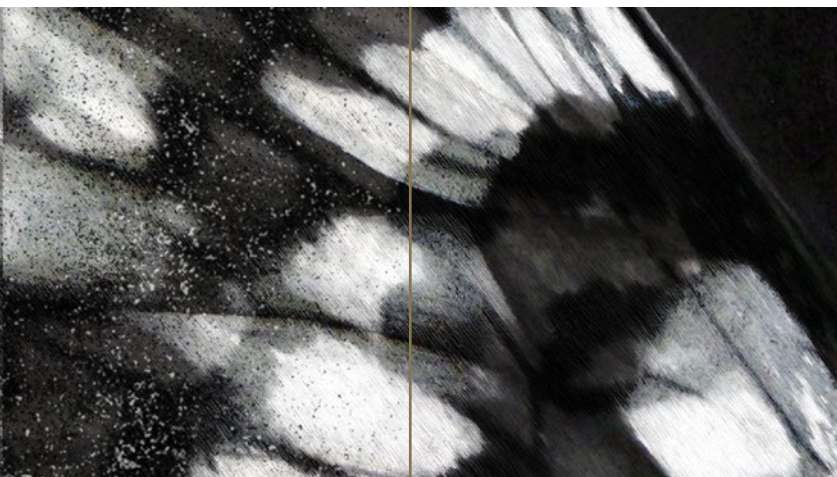
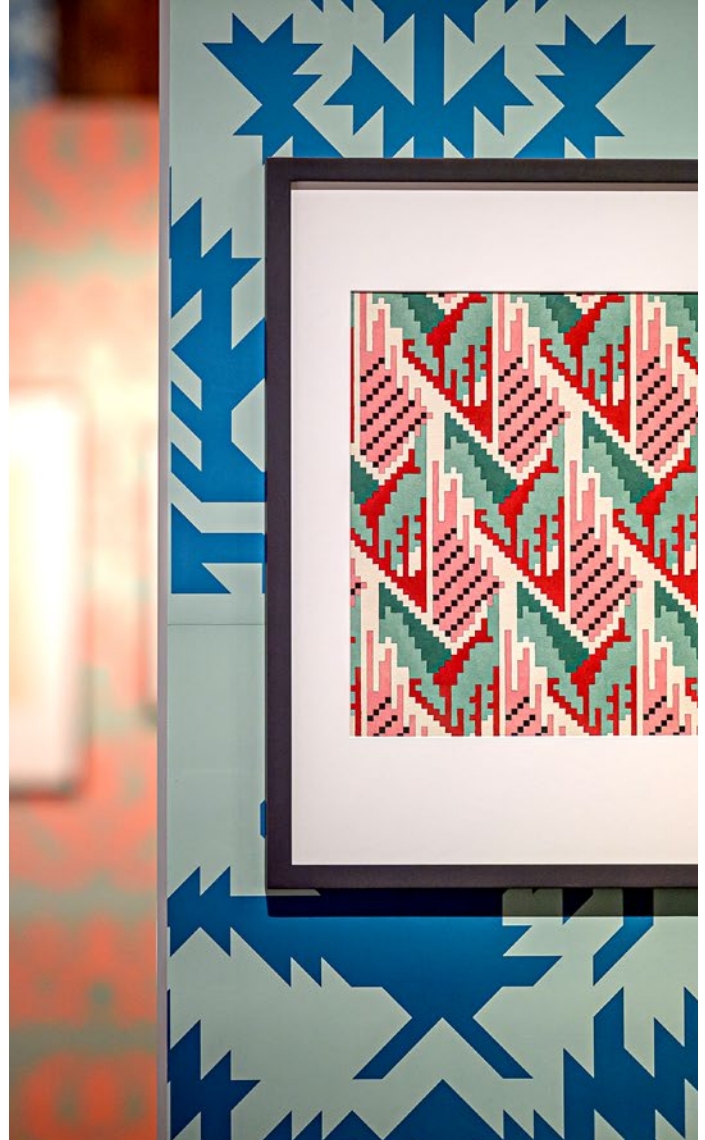
Artglass Lifetime Acrylic | Regular Acrylic

99% UV blocking

Artglass Lifetime Acrylic guarantees maximum protection against ultraviolet rays, safeguarding the colors and mediums from gradual deterioration associated with light.

Lightweight and easy to use

Acrylic is half the weight of glass, making Artglass Lifetime Acrylic the best solution for large scale artworks, and easier handling and shipping of the finished frames.



Regular Acrylic | Artglass Lifetime Acrylic

Anti-static



Artglass Lifetime Acrylic coatings are anti-static, making sure that the glazing won't attract dust or other particles.

Cleaning and handling



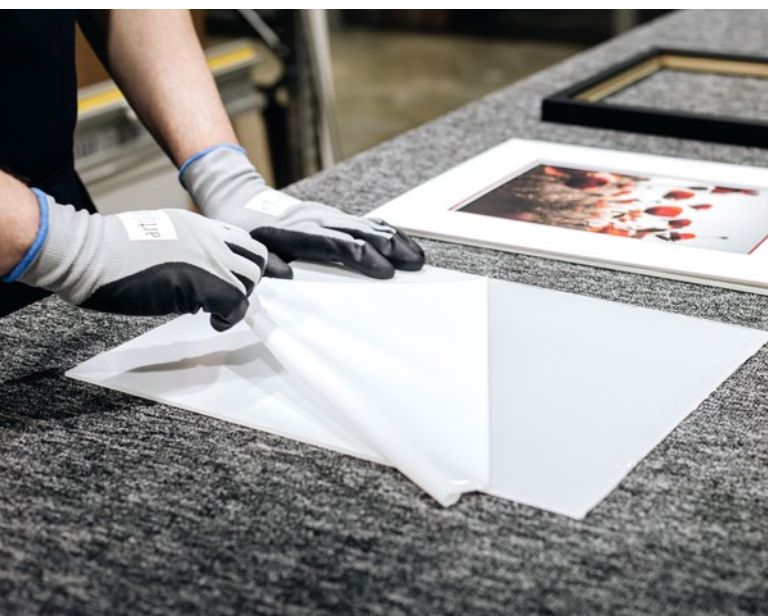
Take the appropriate care when handling acrylic. **We suggest wearing cotton or nitrile rubber gloves to minimize fingerprints** while handling your glazing.

Protective masking film

Artglass Lifetime Acrylic is covered with a **protective film masking both surfaces**. The masking foil shouldn't be exposed to excessive sunlight or outdoor conditions for extended periods of time.

For flawless appearance

Spray a small amount of glass cleaner on the soft microfiber cloth, and clean the acrylic in circular motions. After, wipe the surface with a dry cloth to avoid any liquid stains.



Ready to use

Artglass Lifetime Acrylic comes **ready to use out of the box**. If additional cleaning is necessary, use a soft microfiber or soft lint-free cloth and the glass cleaner by Groglass. **Do not use acrylic cleaners, polishing agents, coarse or abrasive cleaning agents or dirty cloths.**

Cutting

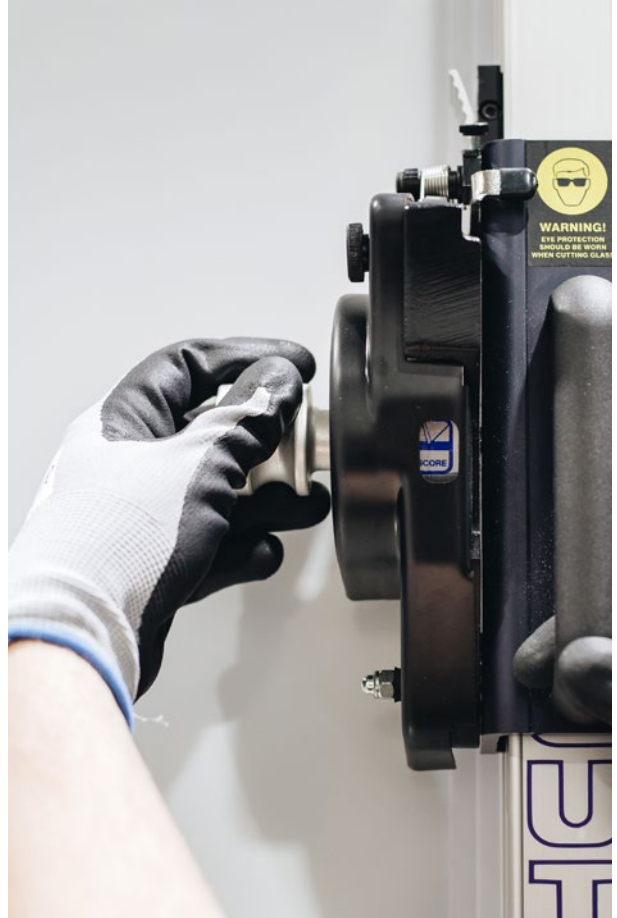
To ensure your safety while cutting our acrylic material, we recommend you **always wear safety glasses and gloves to prevent injuries** associated with handling and processing.

Avoid abrasive surfaces

To maintain flawless appearance, process your glazing on smooth and clean work surfaces. Leave the masking foil on the sheet for easier handling.

Suitable for multi-material cutters

Artglass Lifetime Acrylic can be cut with multi-material cutters, CNC machines and power saw blades that are suitable for handling acrylic.



Score and break



- Use a multi-material scoring knife and score several times to create a narrow gauge in the acrylic sheet.
- Place the sheet over the edge of the worktable with the gauge-side up and clamp the sheet if needed.
- Bend the sheet in a quick and even motion to achieve a smooth acrylic cut.
- Cut the protective film along the snapped line.

SEE WHAT'S IMPORTANT

About Artglass

Artglass Lifetime Acrylic is manufactured by Groglass - one of the world's leading developers and manufacturers of anti-reflective and other high-performance coatings on glass and acrylic for various industries: high-end electronic and static displays, picture framing, museum showcases, architecture and other applications

artglass.groglass.com
www.groglass.com